



# KuPower

## CS3K-275 | 280 | 285P

With Canadian Solar's poly cell technology and the industry leading innovative LIC (Low Internal Current) module technology, we are now able to offer our global customers high power poly modules up to 285 W.

The KuPower poly modules with a dimension of 1675 x 992 mm, close to our 60 cell modules, have the following unique features:

- **Higher** power classes for equivalent module sizes
- **High** module efficiency up to 17.15 %
- **LOW** hot spot temperature risk
- **LOW** temperature coefficient (Pmax): -0.38 % / °C
- **LOW NMOT** (Nominal Module Operating Temperature): 43 ± 2 °C



More power output thanks to low NMOT: 43 ± 2 °C



Low power loss in cell connection



Safer: lower hot spot temperature



Heavy snow load up to 6000 Pa, wind load up to 4000 Pa\*

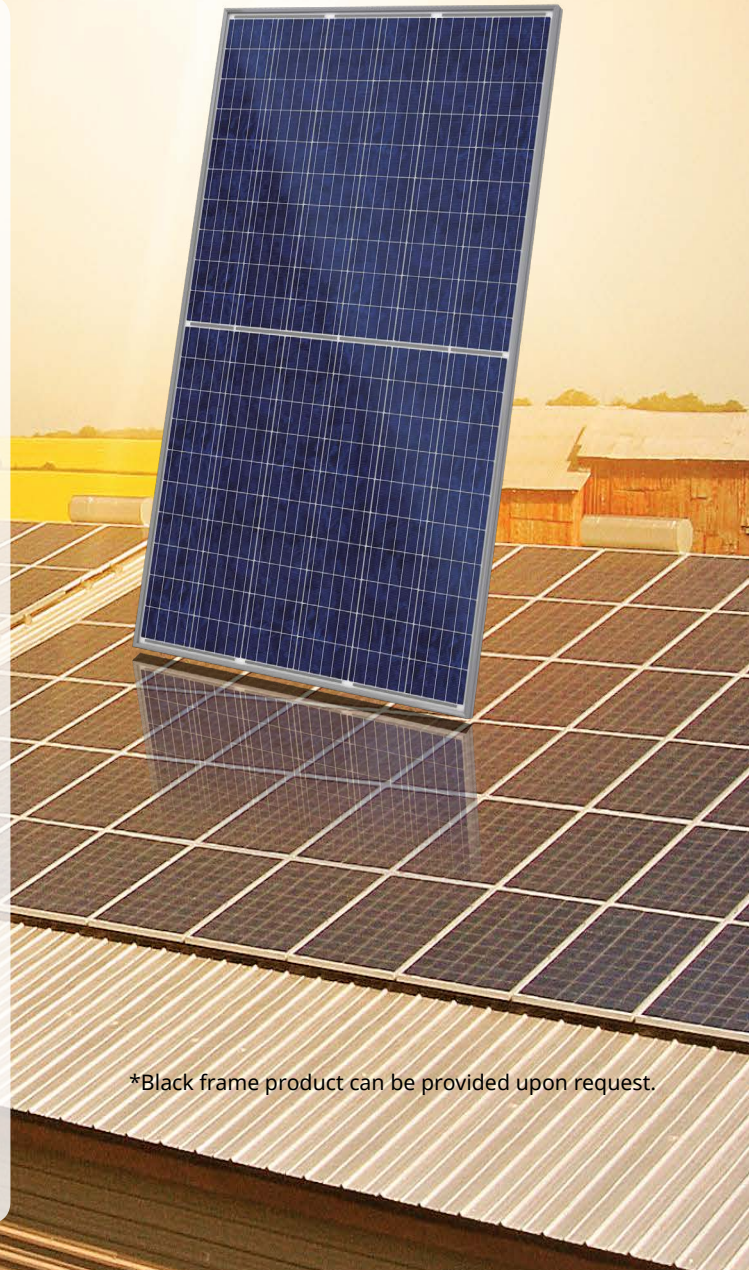


Low BoS cost with 1500 VDC system voltage



High PTC rating of up to: 92.25 %

\* For detailed information, please refer to Installation Manual.



\*Black frame product can be provided upon request.



linear power output warranty



product warranty on materials and workmanship

### PRODUCT CERTIFICATES\*

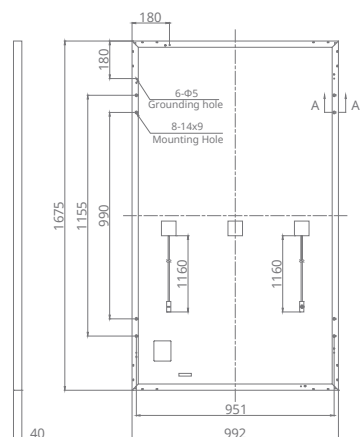
IEC 61215 / IEC 61730: VDE / CE / MCS / CQC  
UL 1703 / IEC 61215 performance: CEC listed (US) / FSEC (US Florida)  
UL 1703: CSA



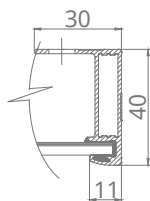
\* If you need specific product certificates, and if module installations are to deviate from our guidance specified in our installation manual, please contact your local Canadian Solar sales and technical representatives.

## ENGINEERING DRAWING (mm)

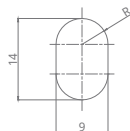
### Rear View



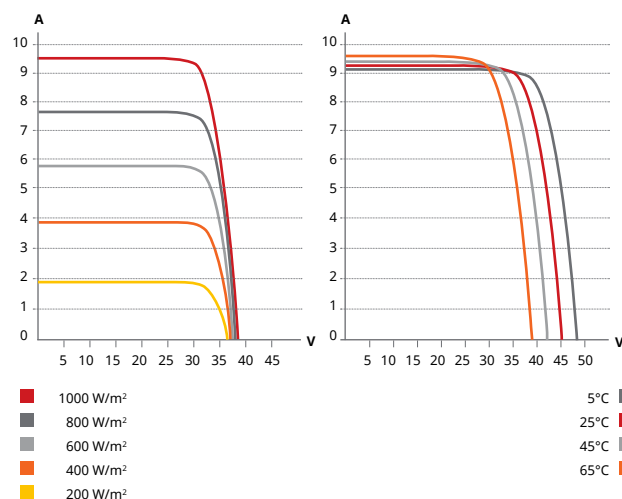
### Frame Cross Section A-A



### Mounting Hole



## CS3K-280P / I-V CURVES



## ELECTRICAL DATA | STC\*

CS3K	275P	280P	285P
Nominal Max. Power (Pmax)	275 W	280 W	285 W
Opt. Operating Voltage (Vmp)	31.0 V	31.2 V	31.4 V
Opt. Operating Current (Imp)	8.88 A	8.98 A	9.08 A
Open Circuit Voltage (Voc)	37.7 V	37.9 V	38.1 V
Short Circuit Current (Isc)	9.38 A	9.47 A	9.56 A
Module Efficiency	16.55%	16.85%	17.15%
Operating Temperature	-40°C ~ +85°C		
Max. System Voltage	1500V (IEC) or 1000V (IEC/UL)		
Module Fire Performance	TYPE 1 (UL 1703) or CLASS C (IEC 61730)		
Max. Series Fuse Rating	30 A		
Application Classification	Class A		
Power Tolerance	0 ~ + 5 W		

\* Under Standard Test Conditions (STC) of irradiance of 1000 W/m<sup>2</sup>, spectrum AM 1.5 and cell temperature of 25°C. Measurement uncertainty: ±3 % (Pmax).

## ELECTRICAL DATA | NMOT\*

CS3K	275P	280P	285P
Nominal Max. Power (Pmax)	203 W	207 W	211 W
Opt. Operating Voltage (Vmp)	28.5 V	28.7 V	28.9 V
Opt. Operating Current (Imp)	7.13 A	7.21 A	7.29 A
Open Circuit Voltage (Voc)	35.1 V	35.3 V	35.5 V
Short Circuit Current (Isc)	7.57 A	7.64 A	7.72 A

\* Under Nominal Module Operating Temperature (NMOT), irradiance of 800 W/m<sup>2</sup>, spectrum AM 1.5, ambient temperature 20°C, wind speed 1 m/s.

## MECHANICAL DATA

Specification	Data
Cell Type	Poly-crystalline, 156.75 X 78.38 mm
Cell Arrangement	120 [2 X (10 X 6)]
Dimensions	1675 X 992 X 40 mm (65.9 X 39.1 X 1.57 in)
Weight	18.5 kg (40.8 lbs)
Front Cover	3.2 mm tempered glass
Frame	Anodized aluminium alloy
J-Box	IP68, 3 diodes
Cable	4.0 mm <sup>2</sup> (IEC), 12 AWG (UL) , 1160 mm (45.7 in)
Connector	T4 series or MC4 series
Per Pallet	27 pieces
Per Container (40' HQ)	756 pieces

## TEMPREATURE CHARACTERISTICS

Specification	Data
Temperature Coefficient (Pmax)	-0.38 % / °C
Temperature Coefficient (Voc)	-0.31 % / °C
Temperature Coefficient (Isc)	0.05 % / °C
Nominal Module Operating Temperature	43 ± 2°C

## PARTNER SECTION



\* The specifications and key features contained in this datasheet may deviate slightly from our actual products due to the on-going innovation and product enhancement. Canadian Solar Inc. reserves the right to make necessary adjustment to the information described herein at any time without further notice.

## CANADIAN SOLAR INC.

Canadian Solar MSS (Australia) Pty Ltd., 44 Stephenson St, Cremorne VIC 3121, Australia  
support@canadiansolar.com, www.canadiansolar.com/au